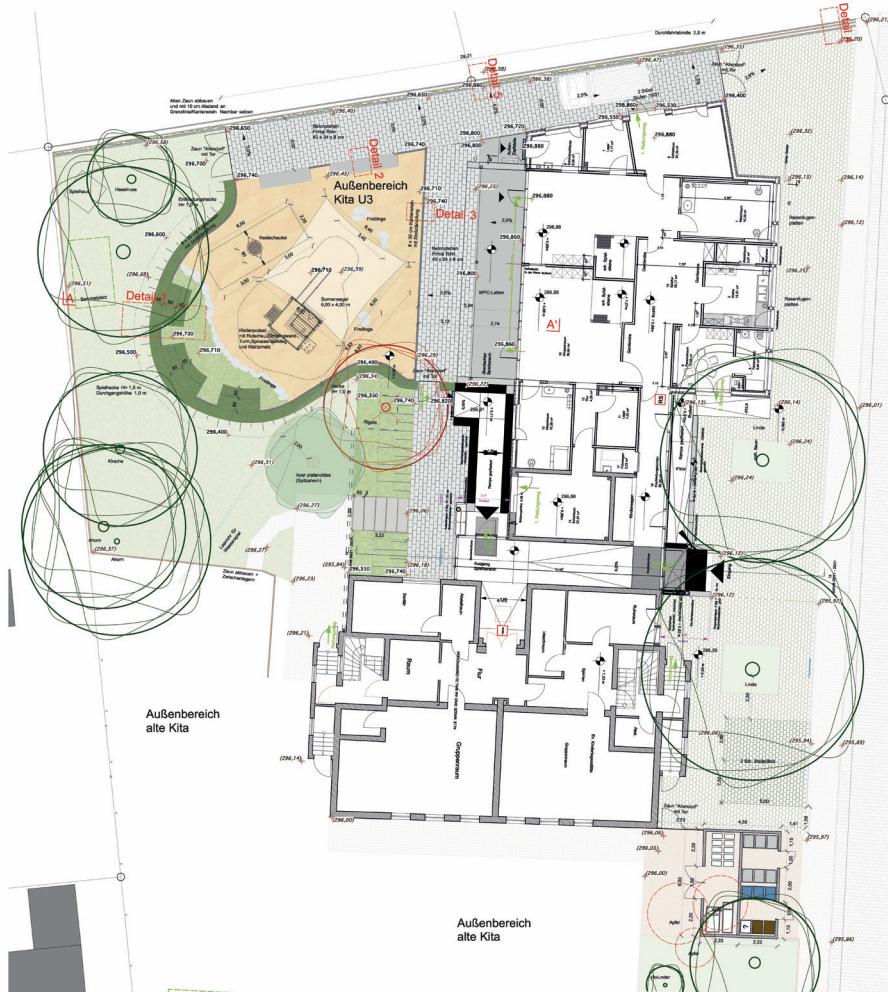


# Conversion of the Day Care Center in Battenfeld-Allendorf

Battenfeld-Allendorf  
Completion 2021

Client: Gemeindevorstand Allendorf  
Area: 650 sqm  
Cost: 122.000 Euro  
Service Phases: Lph 1 - 9  
Duration: 2019 - 2021  
In collaboration with: Architekt  
Hendrik Pape, Büro Hoffmann



Located adjacent to the listed old building of the kindergarten, an extension was built for the care of small children. The outdoor facilities for U3 children and partial areas for children over 3 years needed remodeling. The construction project includes paved areas, open lawn areas and a large sand play area. The latter area begins directly next to a spacious play terrace made of wooden slats and large-format concrete slabs, which can be equipped with classic play equipment such as swings and a climbing tower with a slide at the request of the teachers. Seating cubes implemented at the edge and boulders in the sand play area instinctively incite you to play.

A hedge divides the garden into a U3 and Ü3 area. It not only has a delimiting function, but will also be used as an arbor tunnel, a children's house or to hide away by cutting the middle part.

